


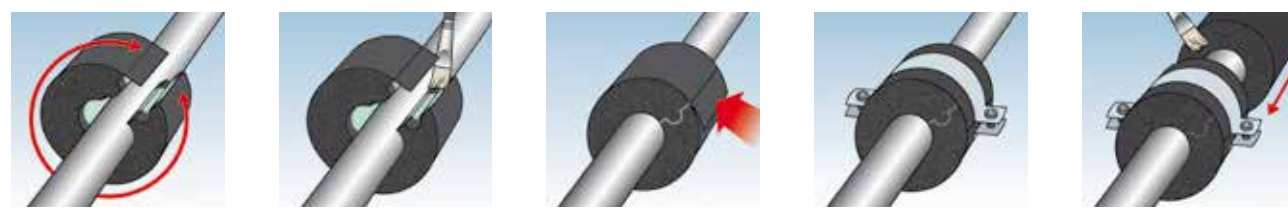


COMPONENTS / INSULATING SUPPORTS

COMPONENTS	K-SIL SILICONE 1209
	Available in Alu color, 310 ml cartridges Recommended for al K-FLEX AL CLAD SYSTEM applications
	SIMSON ISR 70-03 MARINE SILICONE
	Available in Black and Gray color, 290 ml cartridges Recommended for al K-FLEX IN CLAD SYSTEM applications

INSULATING SUPPORTS	PIPE SUPPORTS WITH AND WITHOUT COLLAR	
	Specifically designed to ensure a correct insulation thickness where joints are made. The PIR central section, which covers the whole circumference and is attached to two K-FLEX insulating material sections, ensures a perfect continuity of the vapour barrier. Longitudinal sealing is obtained by means of the self-adhesive overlap. The external cover is in PVC. The support is also available with a collar and a special metal support which, when fixed to the supporting framework, ensures greater overall installation stability.	Measurements: Thicknesses mm: 13, 19, 25, 32 Tube diameter mm: from 18 to 160; inches: from 3/4" to 5"
		TECHNICAL CHARACTERISTICS
	Central section in PIR Compression resistance Temperature range Thermal conductivity Maximum stockage time Colour Permeability to vapour Diam. and thickness tolerance	



- 1 - Place the insulating support around the pipe.
- 2 - Spread K-FLEX adhesive onto the half-collars.
- 3 - Seal lengthways using the adhesive overlap.
- 4 - Fix the collar around the support.
- 5 - Glue the support to the insulating material.

The insulating supports are also available in K-FLEX ECO, SOLAR, AL CLAD, COLOR, in the same measurements as those indicated for K-FLEX ST.

